

# Tool to Reflect Overall Voter Engagement



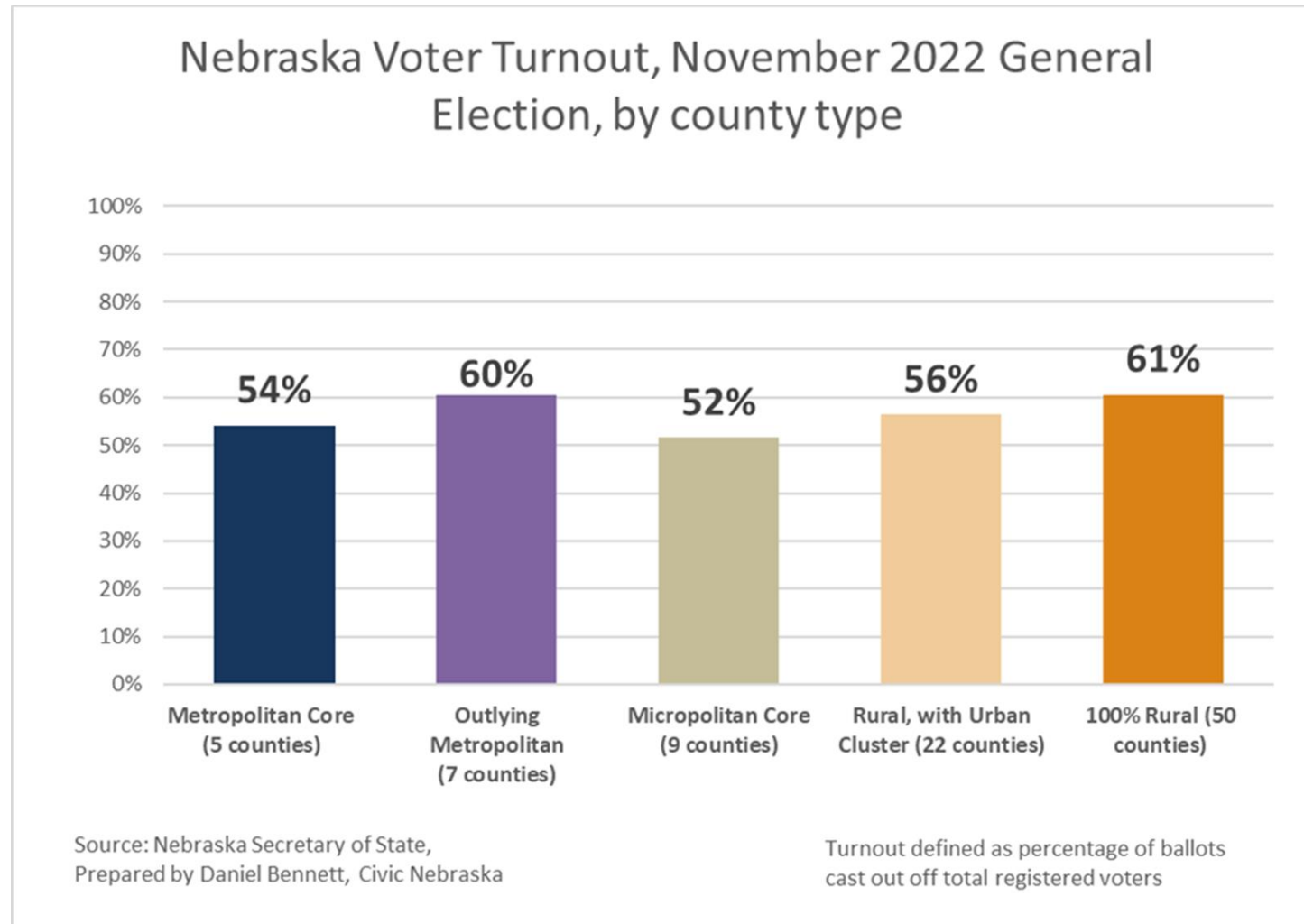
# What is TROVE?

- Interactive mapping tool for Nebraskans to explore voter turnout in their town or neighborhood
- Data available at county, census tract, and zip code level
- $\text{Turnout} = (\text{Total Ballots Cast}) / (\text{Total Registered Voters})$

# Overall increase in registration, decrease in turnout compared to 2018

2018	2022
November General Election	November General Election
<b>57.95%</b>	<b>54.93%</b>
706,652 people voted	682,716 voted
1,219,319 registered voters	1,242,930 registered voters

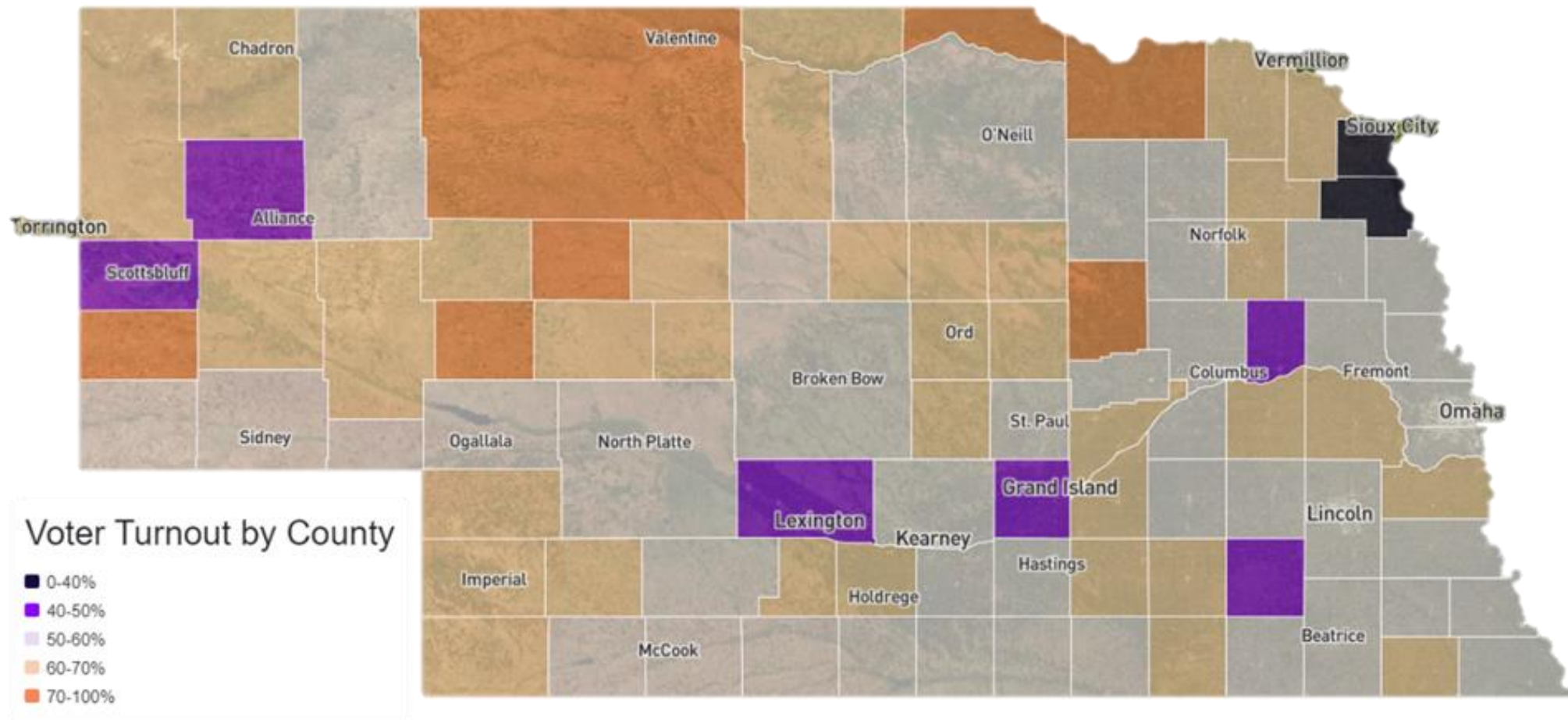
# Highest turnout among Rural and outlying Metro counties



# Higher voter turnout as age increases

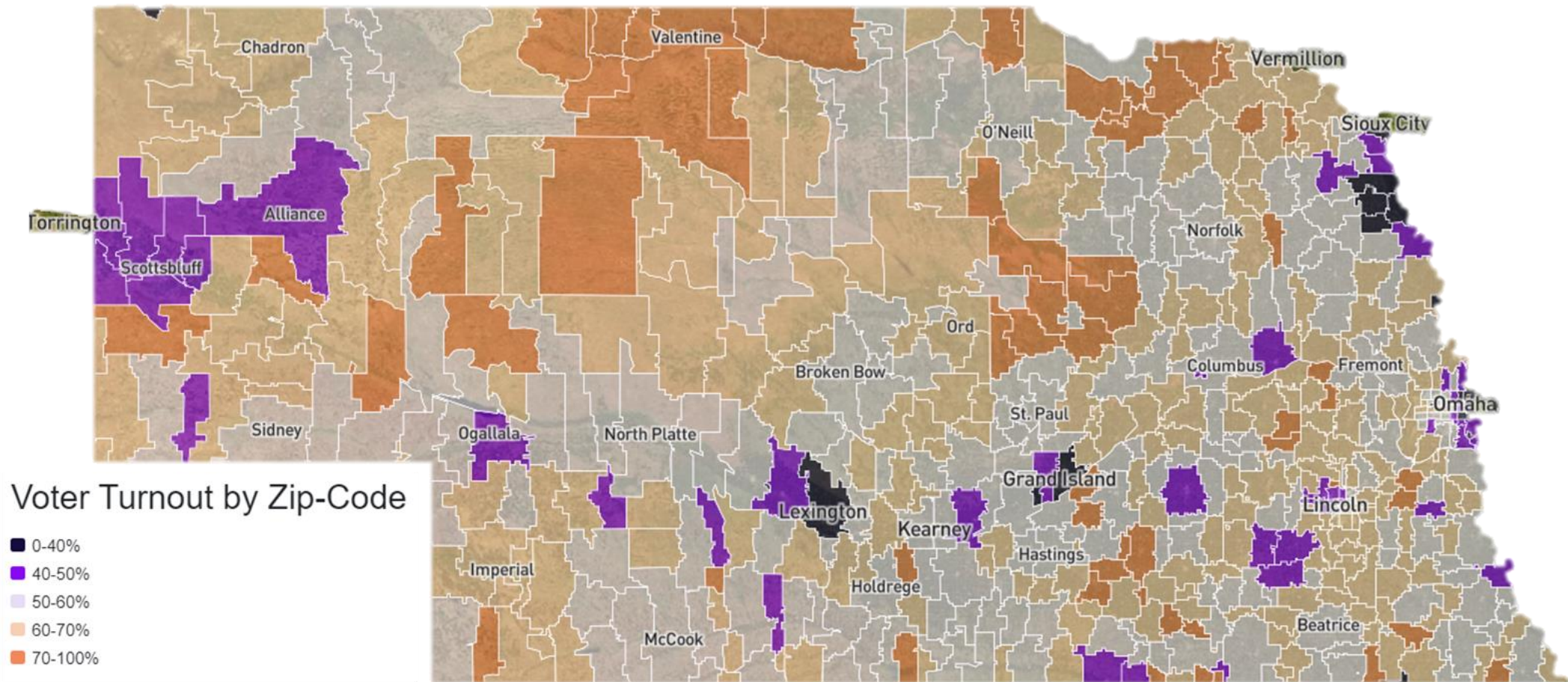
Voter turnout by Age Group			
18-29	30-44	45-64	65+
29%	45%	62%	75%

*Source: Nebraska Secretary of State, Dec 2022 Voter File, Prepared by Daniel Bennett, Civic Nebraska*

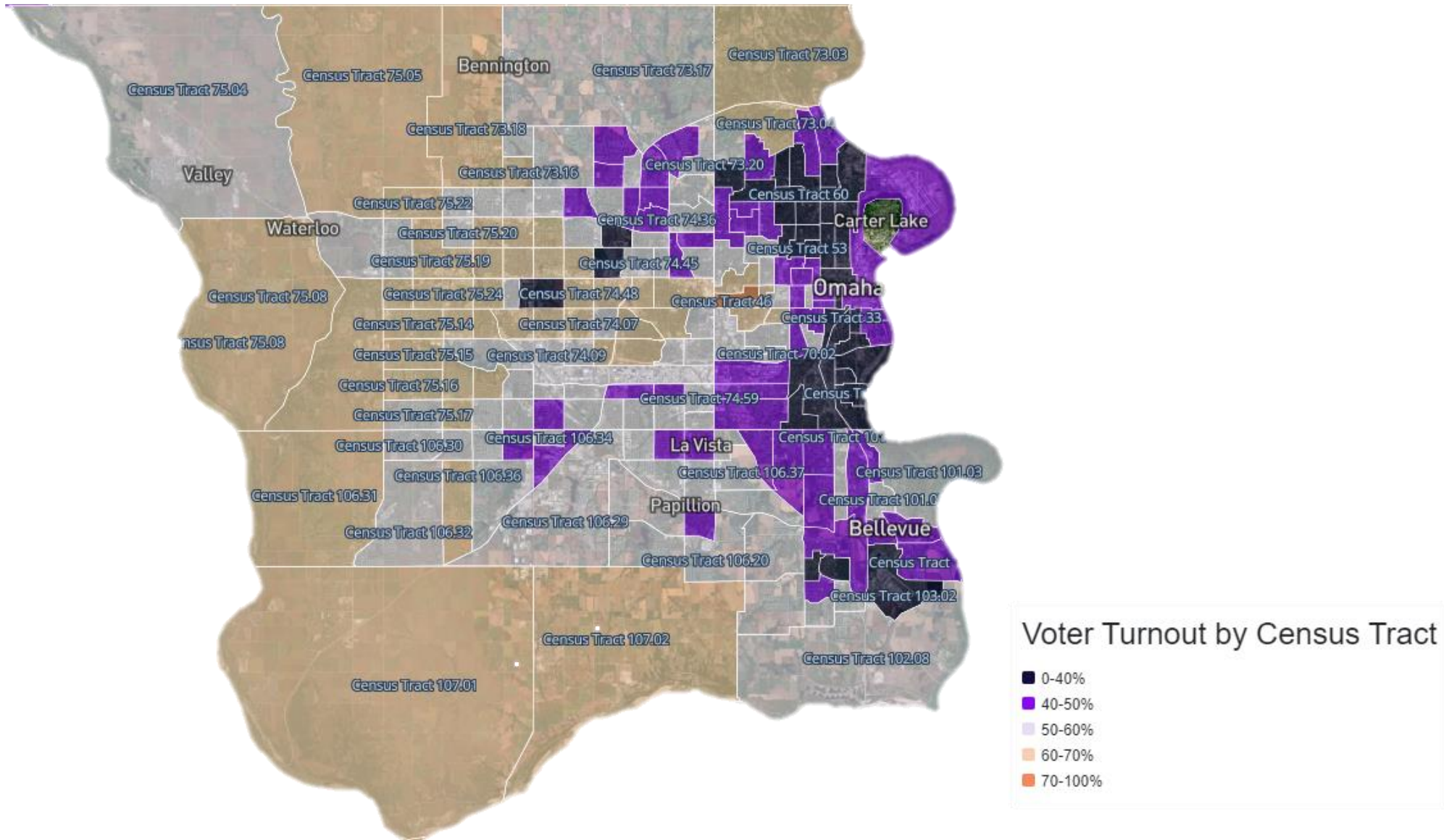


Source: NE Secretary of State Voter File, Dec 2022; prepared by Derek Juracek



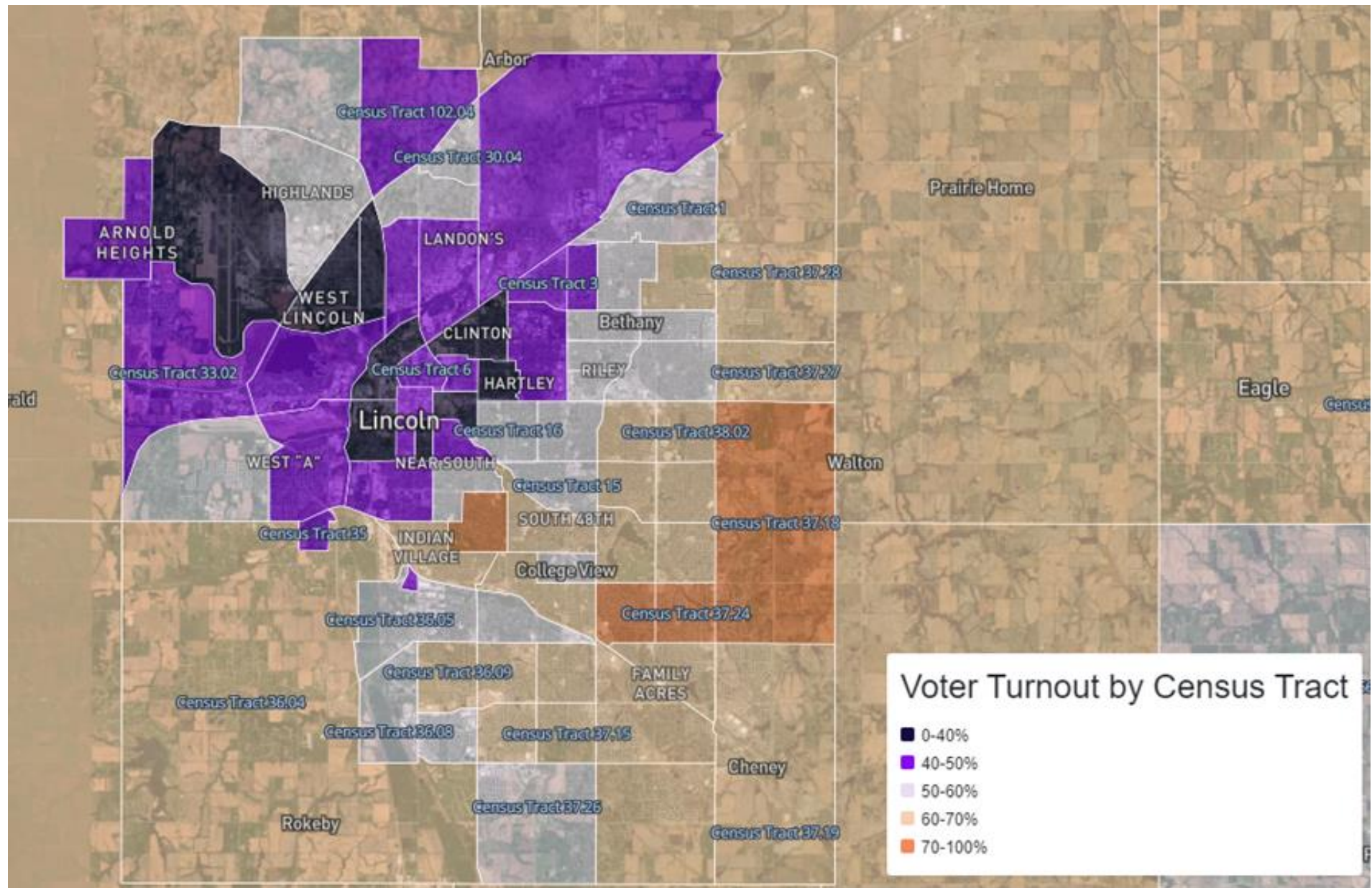


Source: NE Secretary of State Voter File, Dec 2022; prepared by Derek Juracek

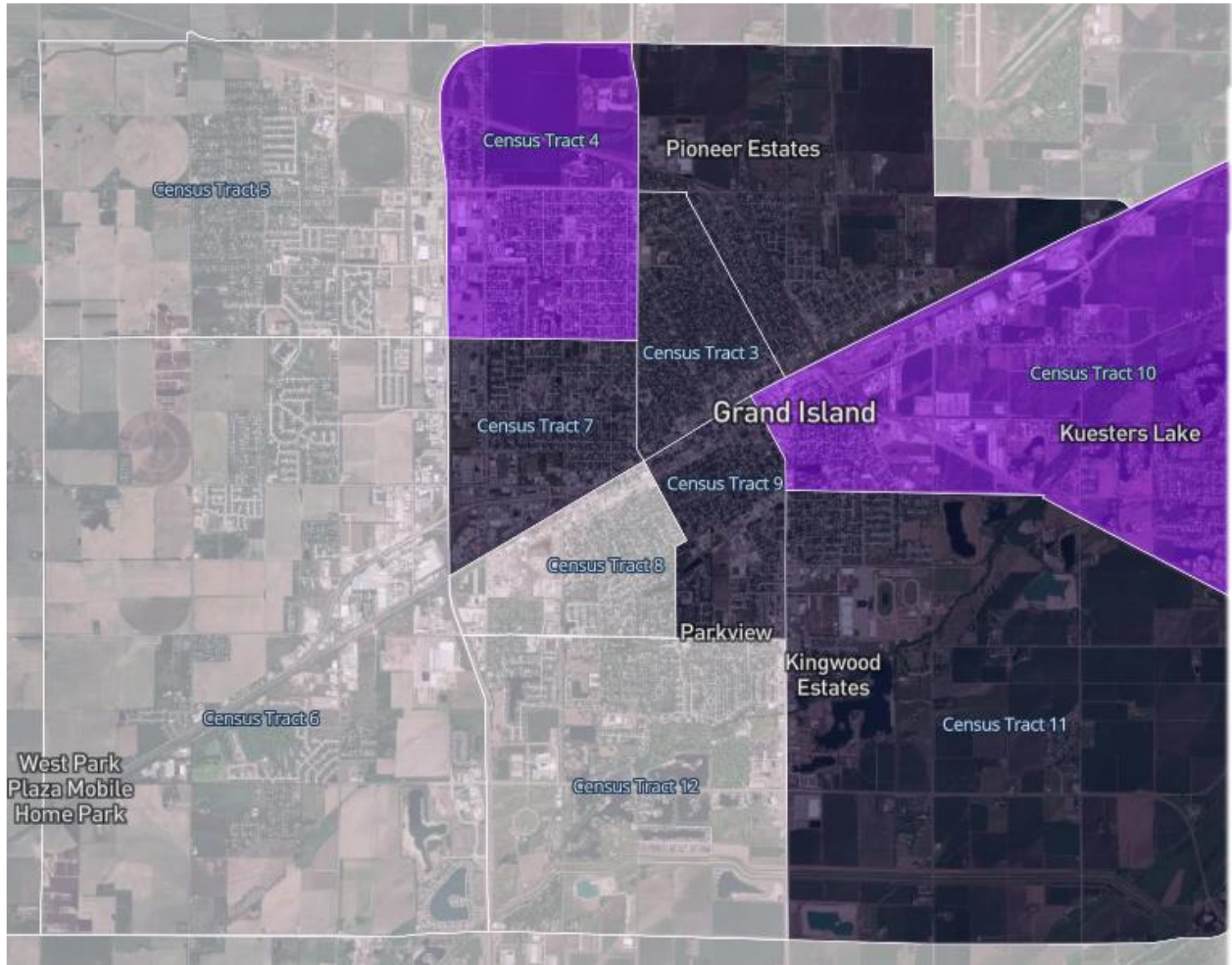


Source: NE Secretary of State Voter File, Dec 2022; prepared by Derek Juracek





Source: NE Secretary of State Voter File, Dec 2022; prepared by Derek Juracek

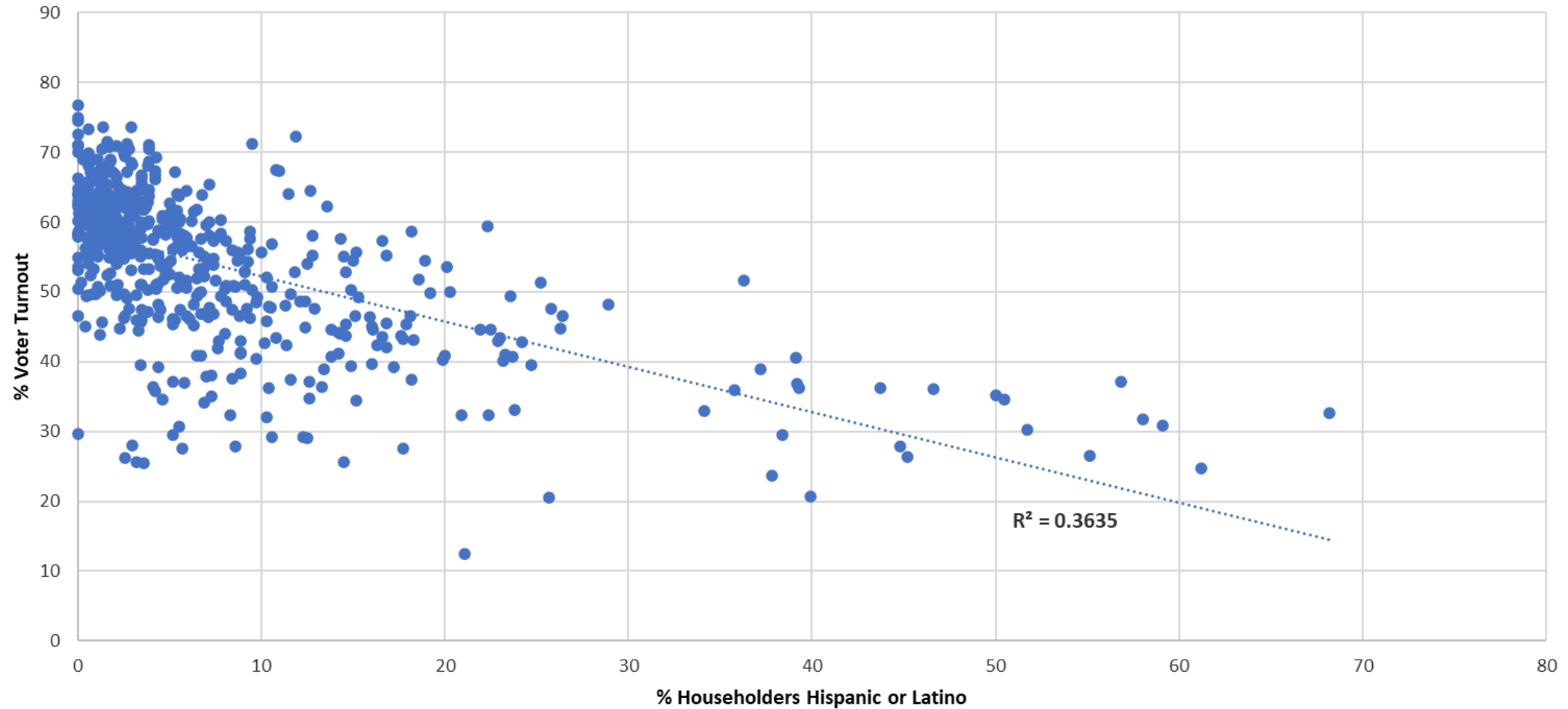


Voter Turnout by Census Tract

- 0-40%
- 40-50%
- 50-60%
- 60-70%
- 70-100%

Source: NE Secretary of State Voter File, Dec 2022; prepared by Derek Juracek

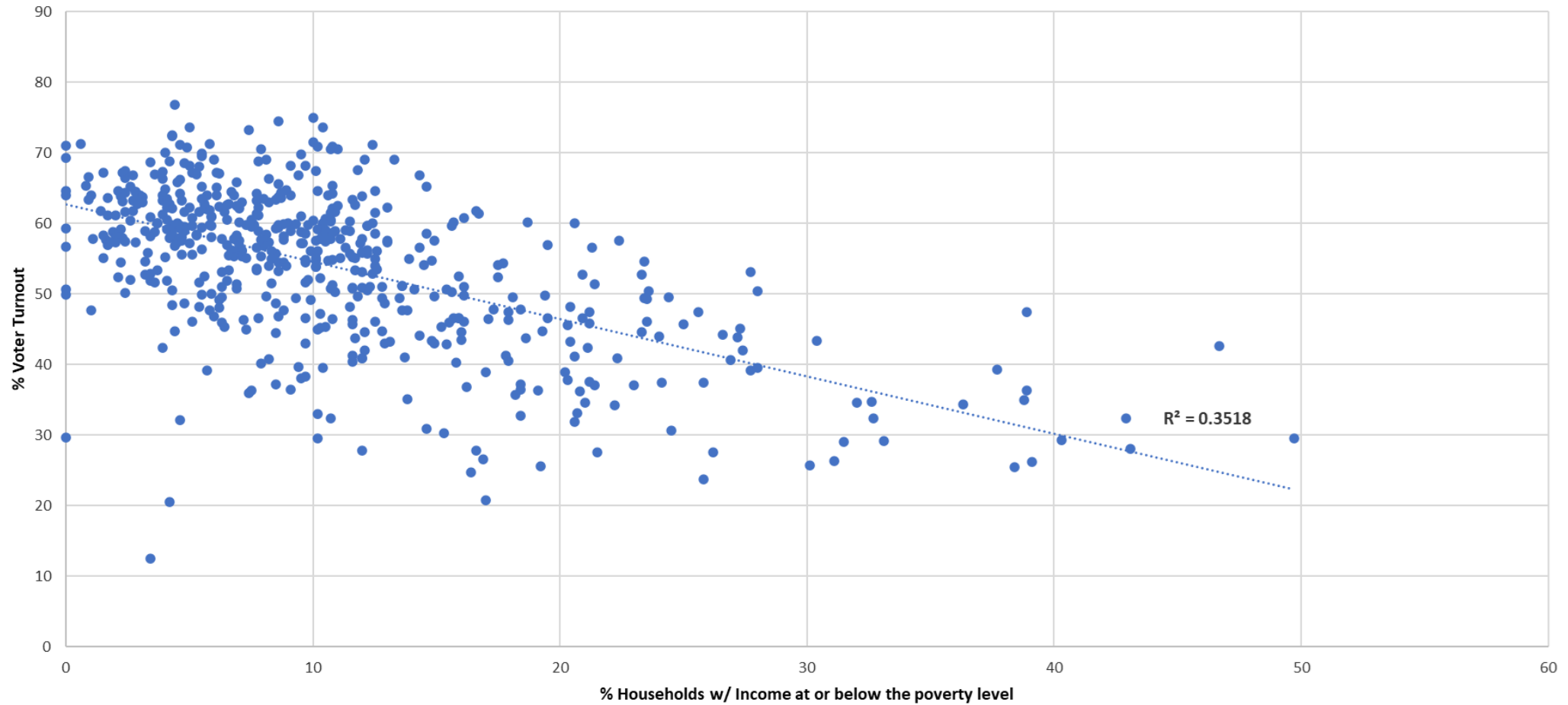
# Nebraska Voter Turnout vs. Hispanic or Latino Householders, Nov. 2022 General Election, by Census Tract



Source: Nebraska Secretary of State, Dec. 2022 Voter File and US Census Bureau 2017-2021 ACS 5-year Estimates  
Prepared by Daniel Bennett and Derek Juracek



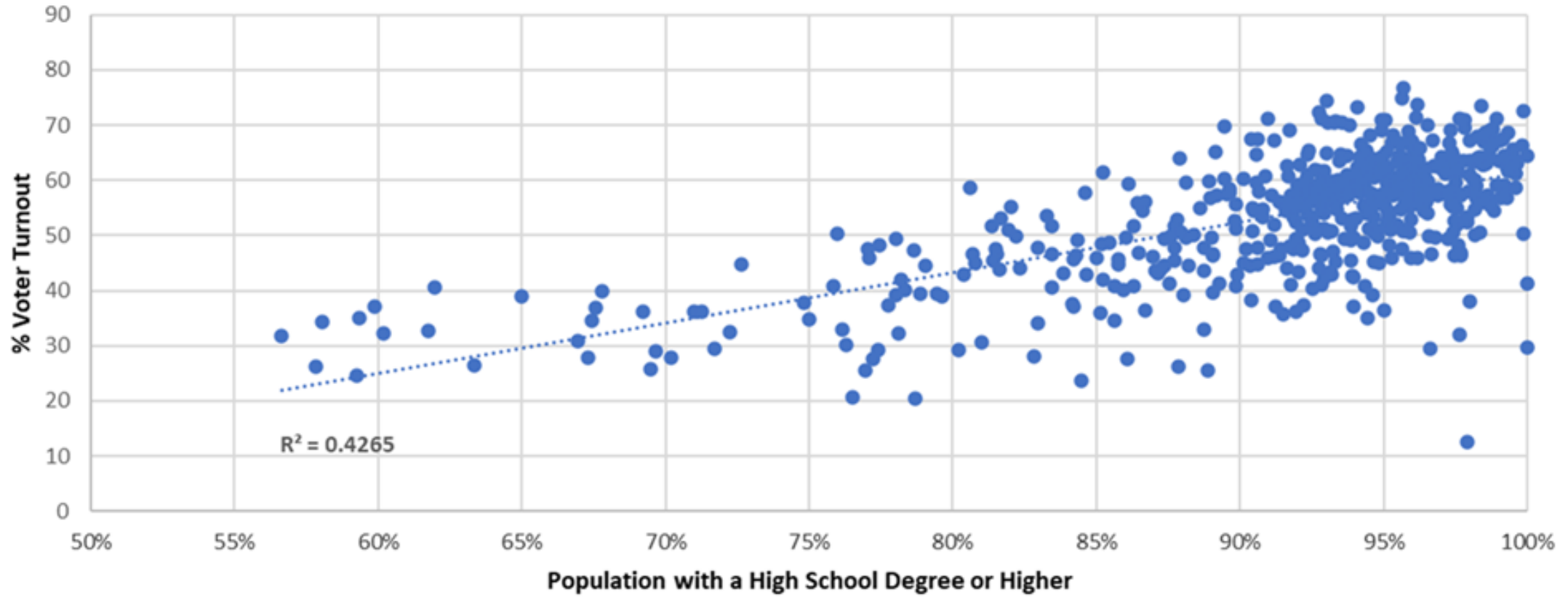
# Nebraska Voter Turnout vs. Households with income at or below poverty level, Nov. 2022 General Election, By Census Tract



Source: Nebraska Secretary of State, Dec. 2022 Voter File and  
US Census Bureau 2017-2021 ACS 5-year Estimates  
Prepared by Daniel Bennett and Derek Juracek

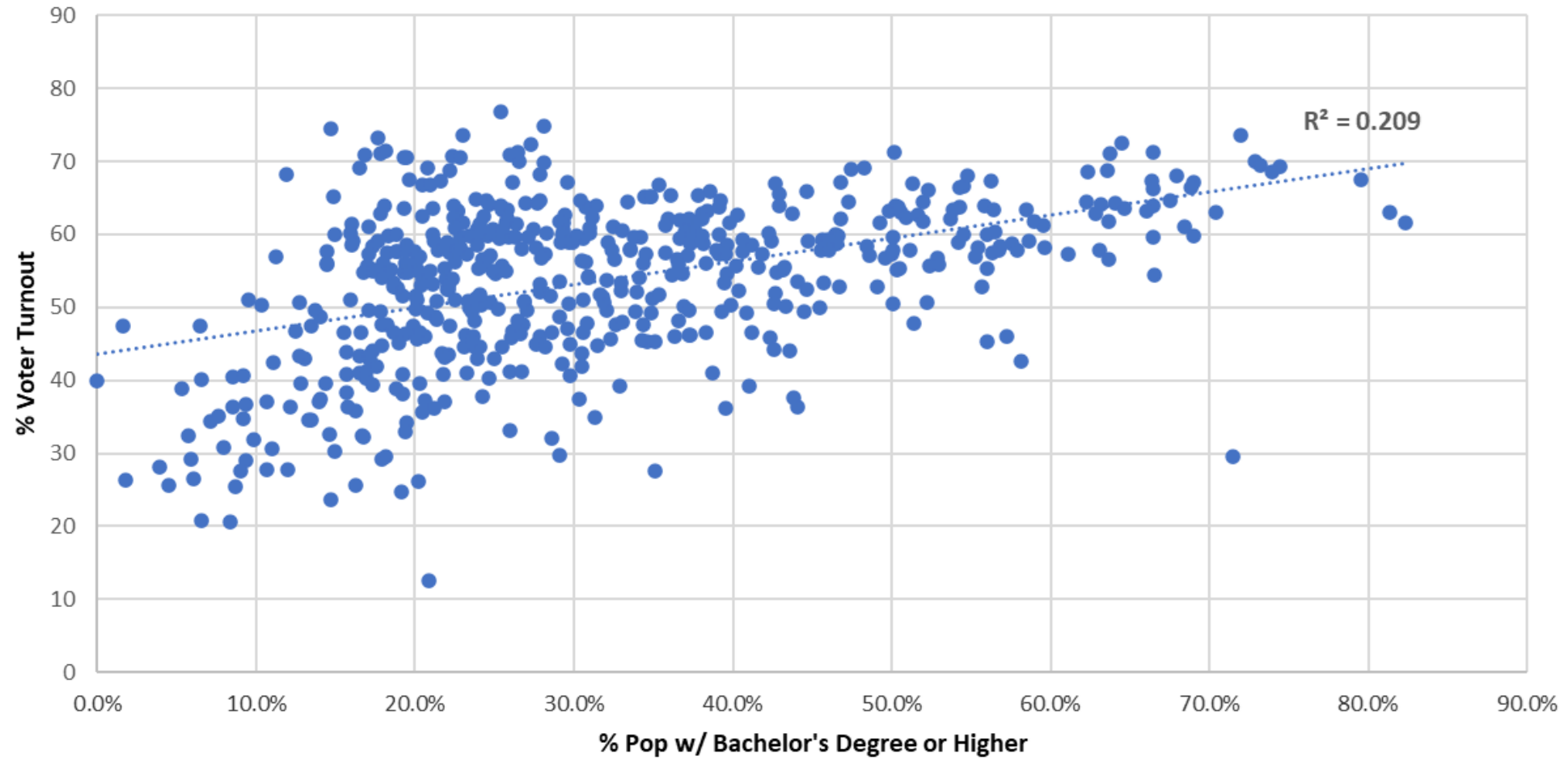


# % Population 25 years and older with High School Degree or Higher Vs. Nebraska Voter Turnout, Nov. 2022 General Election, by Census Tract



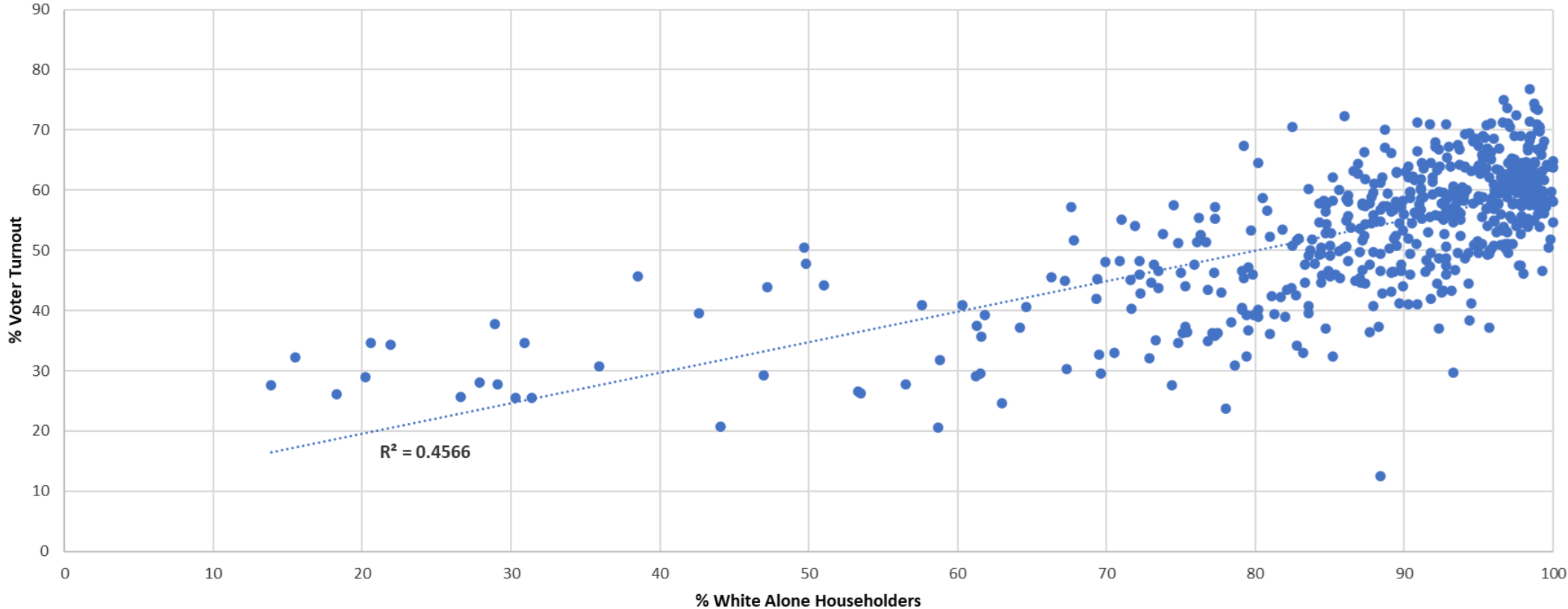
Source: Nebraska Secretary of State, Dec. 2022 Voter File  
and US Census Bureau ACS 5-year Estimates  
Prepared by Daniel Bennett and Derek Juracek

# Nebraska Voter Turnout vs. % Population 25 years or older with a Bachelor's Degree or higher, Nov. 2022 General Election, by Census Tract



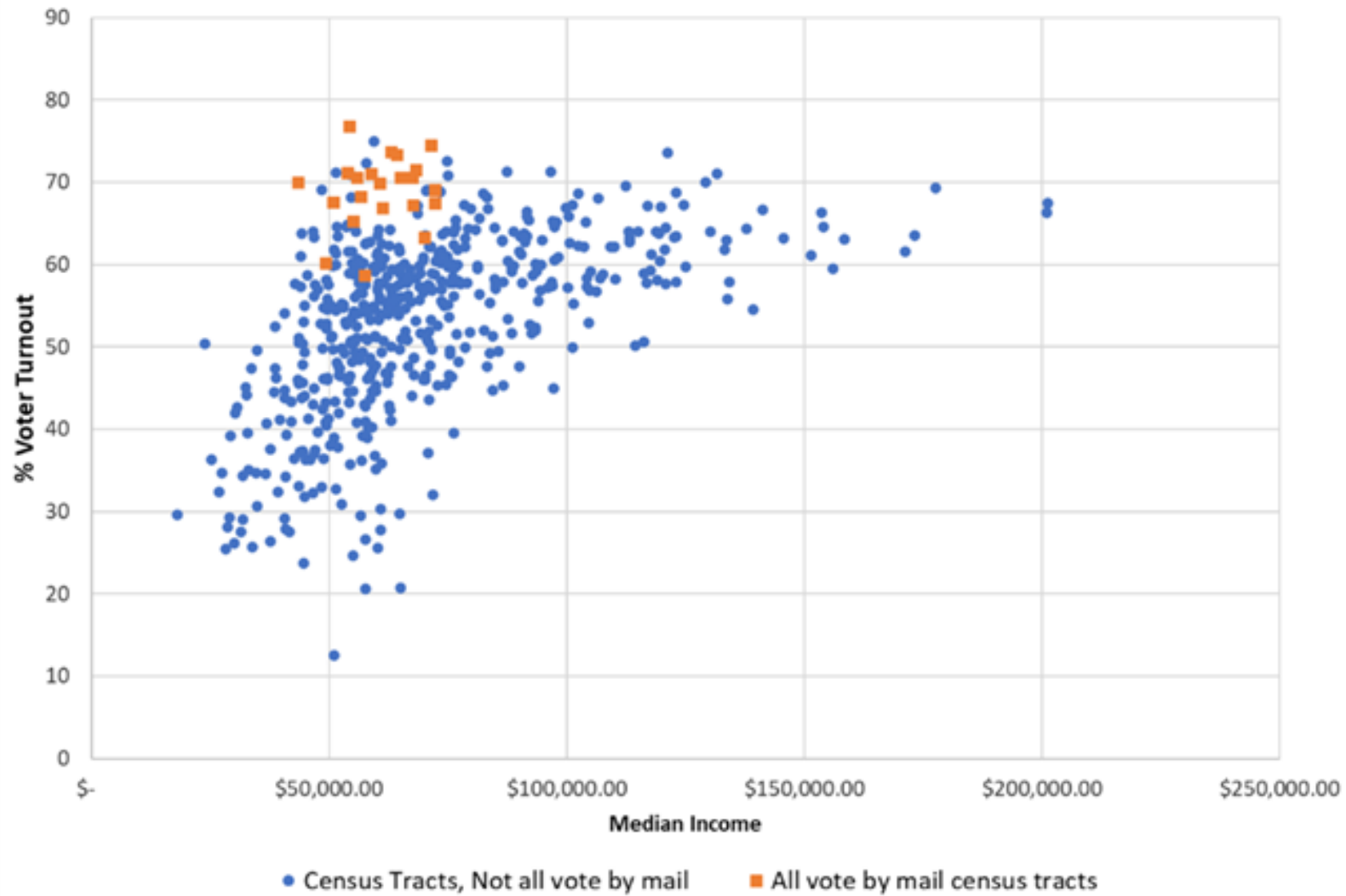
Source: Nebraska Secretary of State, Dec. 2022 Voter File and US Census Bureau 2017-2021 ACS 5-year Estimates  
Prepared by Daniel Bennett and Derek Juracek

# Nebraska Voter Turnout vs. % of White alone householders, Nov. 2022 General Election, By Census Tract



Source: Nebraska Secretary of State, Dec. 2022 Voter File and US Census Bureau 2017-2021 ACS 5-year Estimates  
Prepared by Daniel Bennett and Derek Juracek

### Voter Turnout, November 2022 Nebraska General Election vs. Median Household Income, by Census Tract



Sources: NE Secretary of State Voter File, Dec 2022 and US Census Bureau 2021 ACS 5-year Estimates  
Prepared by Derek Juracek and Daniel Bennett